

Fertile-Focus™

Personal Ovulation Microscope



Quality. Accuracy. Affordability.

Focus on Fertility!

Fertile-Focus is a personal ovulation microscope that allows you to predict ovulation easily and accurately.

When a woman is about to ovulate, a distinct crystal or "ferning" pattern becomes present in her saliva due to an increase in the hormone estrogen.

To find out if you are ovulating, simply place a drop of saliva on the lens and read the pattern. With a sharp, focalizable 60X magnification lens, Fertile-Focus allows you to accurately and confidently pinpoint when you are most likely to conceive!



Reusable - Unlimited Tests!
100% Safe Saliva-Based Testing
Easy-to-use and 98% Accurate*
1-Year Warranty from Defects
Superior Quality at an Affordable Price!

Quality. Accuracy. Affordability.

Fertile-Focus removes the guesswork in predicting a woman's most fertile time - and eliminates the need for expensive, messy urine ovulation tests. With Fertile-Focus you receive:

- **Quality:** A metal body & high-quality lens insures unlimited testing.
- **Clarity:** A powerful, focalizable, 60X magnification ocular lens.
- **Convenience:** Test anytime and anywhere. Results in just five minutes.
- **Discretion:** Looks like an attractive lipstick case.
- **Affordability:** Other brands of saliva fertility tests offer lesser quality (a plastic lens and body) - at twice the cost!

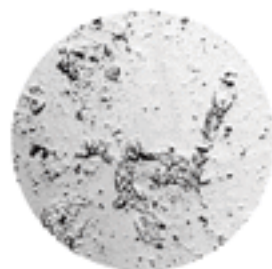
All-natural, hygienic, and effortless to use, Fertile-Focus is backed by research. For women who are trying to conceive, determining ovulation using saliva-based microscopy is 98% accurate in predicting ovulation. Ideal for women with both regular or irregular menstrual cycles, Fertile-Focus offers you a natural and affordable way to increase your chances of conception!

Contact Fertile-Focus at www.fertile-focus.com
or call 360.671.0859

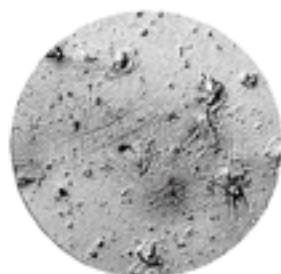
"Learn in just minutes if you are ovulating - your most fertile time of the month to conceive..."

Using Fertile-Focus

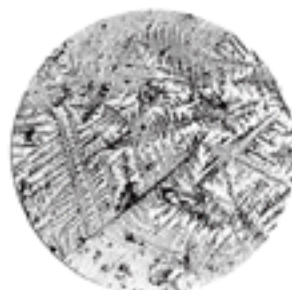
1. Place a drop of saliva on the surface of the Fertile-Focus lens.
2. Allow the saliva sample to dry for at least five minutes and replace the lens into the body of the microscope.
3. Look into the lens and push the light button to observe the test result. To focus, rotate the lens while bringing it close to the eye.
4. If you see a "ferning" or crystal pattern in your saliva, you know you are fertile - the perfect time to conceive!



Not Fertile



Transitional



Fertile

Manufactured and Distributed by Fairhaven Health www.fairhavenhealth.com